

**The Islamic University College of Medical Technologies Department of Radiology Technologies  
First Stage**

**Lecture two: The Upper Limbs**

**MSC:Tariq Mohammed Alshybany /MSC:Mohammed.K.S.Alquraishi.**

**MSC:Ali nahed Abdu Alameer**



# **Practical General Anatomy**

## **LAB 2**

### **The Upper Limbs**

Themes of the lecture:-

- 1- Introduction to upper limbs.
- 2- Pectoral Girdle.
- 3- Articulations of Clavicle.
- 4- The upper limb muscles.
- 5 Triceps brachii.

The purpose of the lecture:-

(Introducing the student to the upper limbs and muscles of upper limbs)

Behavior Objectives:-

- 1- To know the definition of the upper limbs.
- 2- In order for the student to learn the details of upper limbs.
- 3- The student should be able to know scientific names of upper limbs.
- 4- The student be able to differentiate bones and muscle of upper limbs.
- 5- The student enumerates all parts of upper limbs and it muscles.

References of the lecture:-

[https://books.google.iq/books?id=aK52DwAAQBAJ&printsec=frontcover&dq=general+anatomy+book+pdf&hl=ar&sa=X&redir\\_esc=y#v=onepage&q&f=false](https://books.google.iq/books?id=aK52DwAAQBAJ&printsec=frontcover&dq=general+anatomy+book+pdf&hl=ar&sa=X&redir_esc=y#v=onepage&q&f=false)

[https://books.google.iq/books?id=6bZEDwAAQBAJ&printsec=frontcover&dq=general+anatomy+book+pdf&hl=ar&sa=X&redir\\_esc=y#v=onepage&q&f=false](https://books.google.iq/books?id=6bZEDwAAQBAJ&printsec=frontcover&dq=general+anatomy+book+pdf&hl=ar&sa=X&redir_esc=y#v=onepage&q&f=false)

# Appendicular Skeleton

Includes :

Pectoral or shoulder girdle ❖

Scapula ■

Clavicle ■

Upper Limbs ❖

Arm ■

Forearm ■

Wrist ■

Hand ■

Pelvic girdle ❖

Ilium ■

Pubis ■

Ischium ■

Lower Limbs ❖

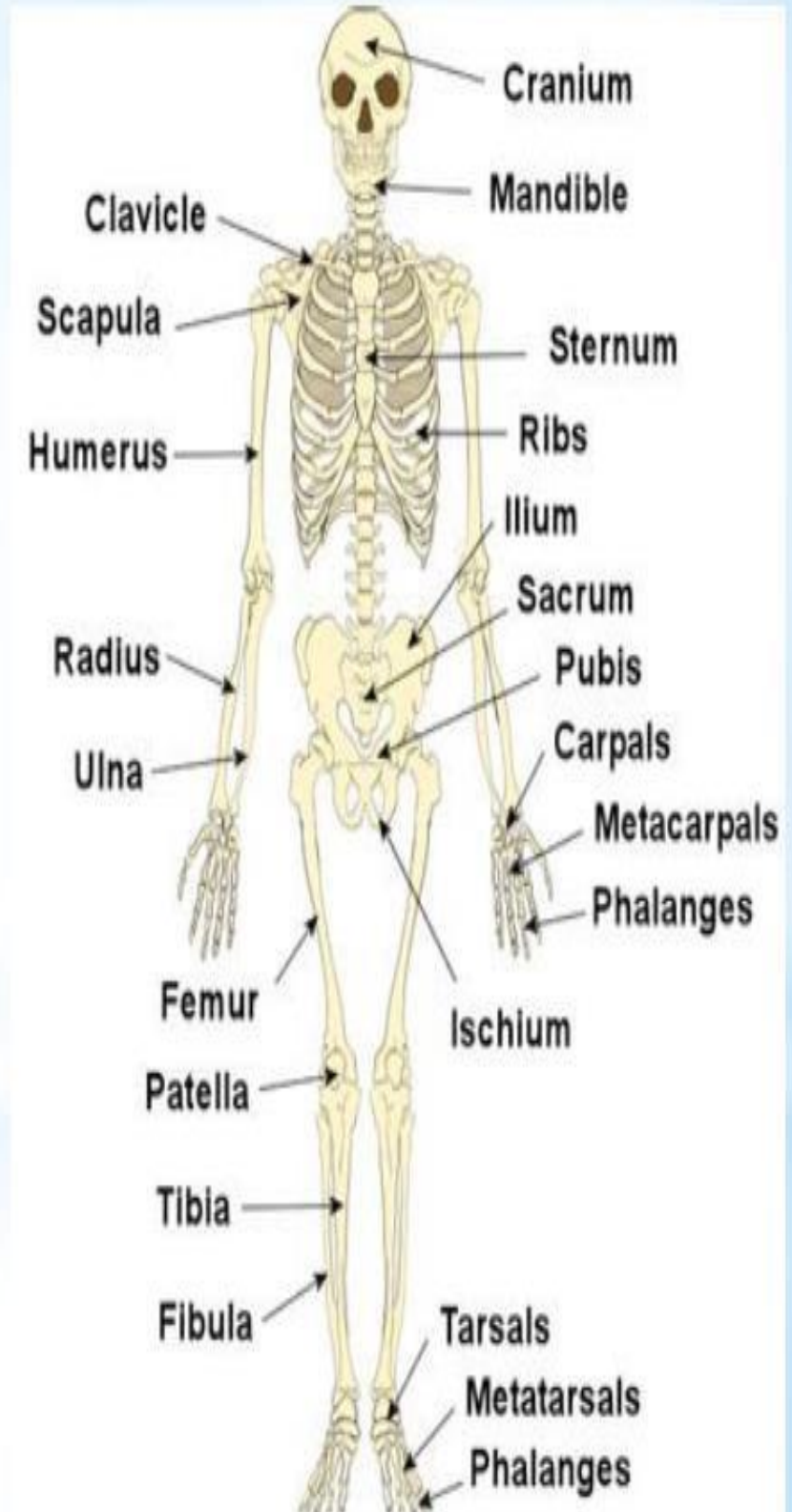
Thigh ■

Patella ■

Leg ■

Ankle ■

Foot ■

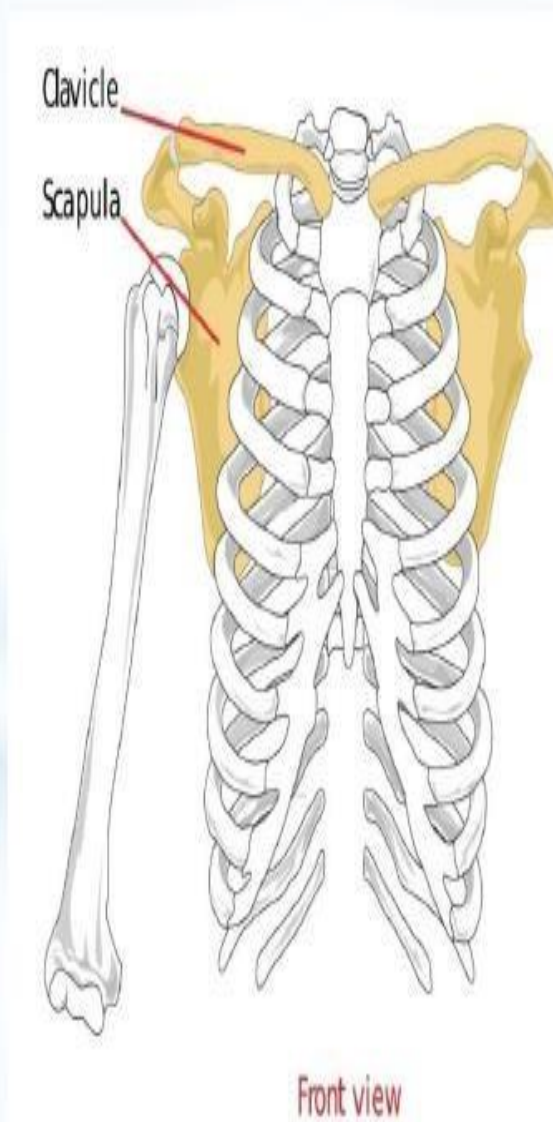


## Pectoral girdle (Shoulder)

The pectoral girdle consists of two bones that attach the <sup>\*</sup> upper limb to the body:

a. The scapula .

b. The clavicle .



## Upper limb

### Arm ➤

It contains only one bone, called **the humerus**, which includes:

**Humerus head:** articulates with the ➤  
**glenoid cavity** of the scapula.

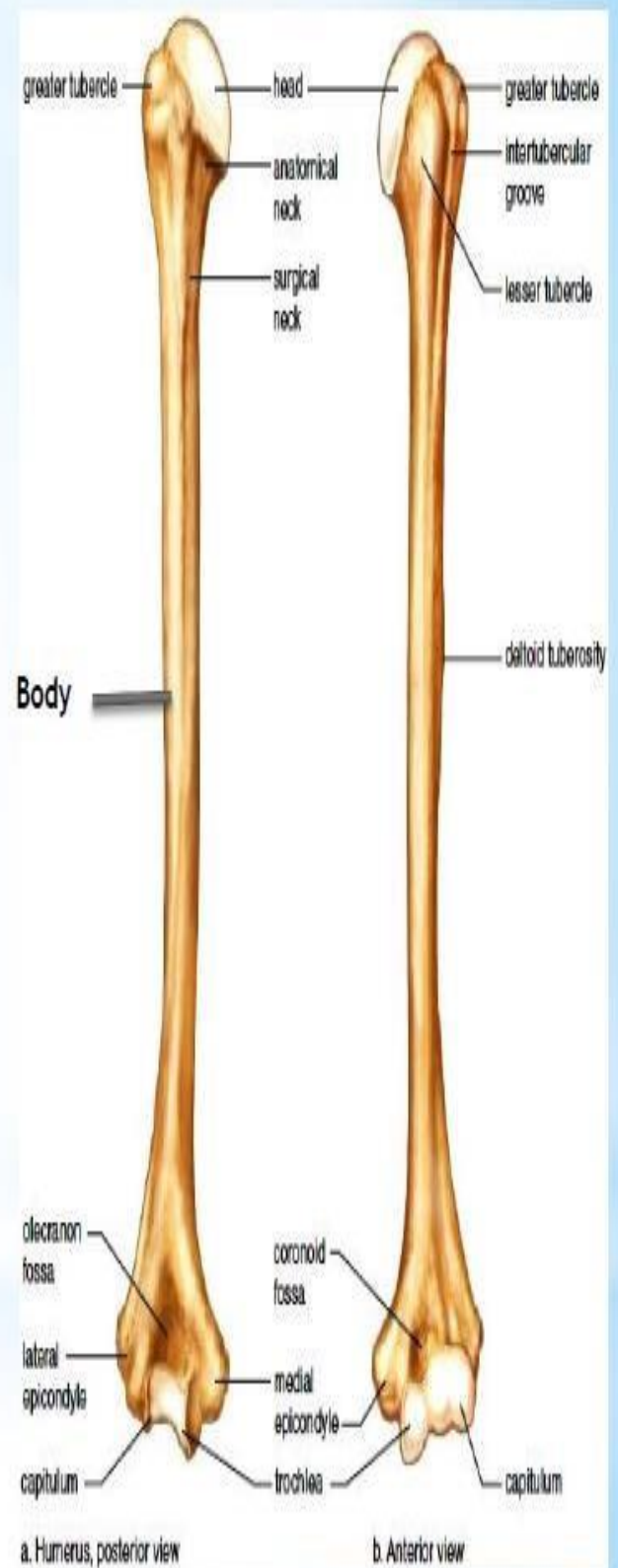
**Neck.** ➤

**Groove.** ➤

**Body.** ➤

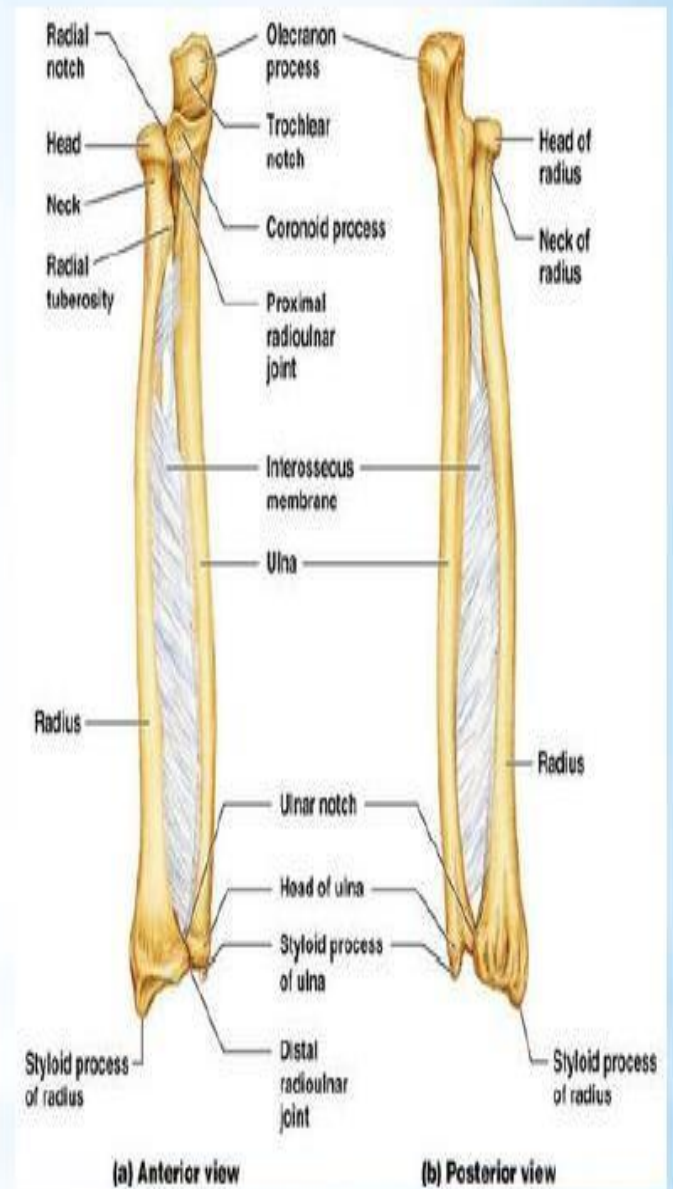
**Capitulum:** it is a rounded projection ➤  
articulates with the **radius**.

**Trochlea:** it articulates with the ➤  
**ulna**.



# Forearm

Formed of two bones:  
 A- Ulna is medial bone.  
 B- Radius is lateral bone..

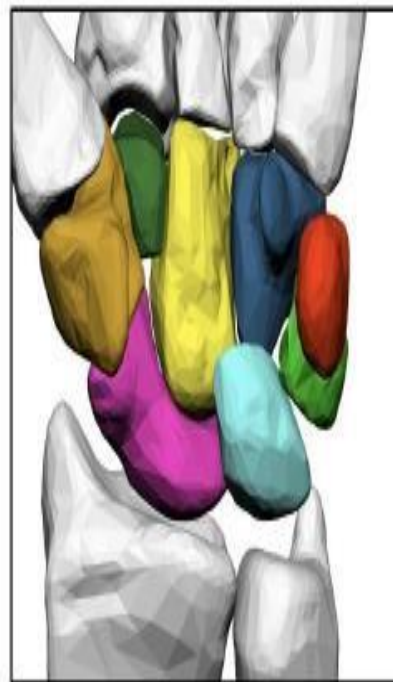


## Wrist ➤

It is a relatively short region between the forearm and hand composed **eight** carpal bones.

## Carpal Bones

 Scaphoid	 Trapezium
 Lunate	 Trapezoid
 Triquetrum	 Capitate
 Pisiform	 Hamate

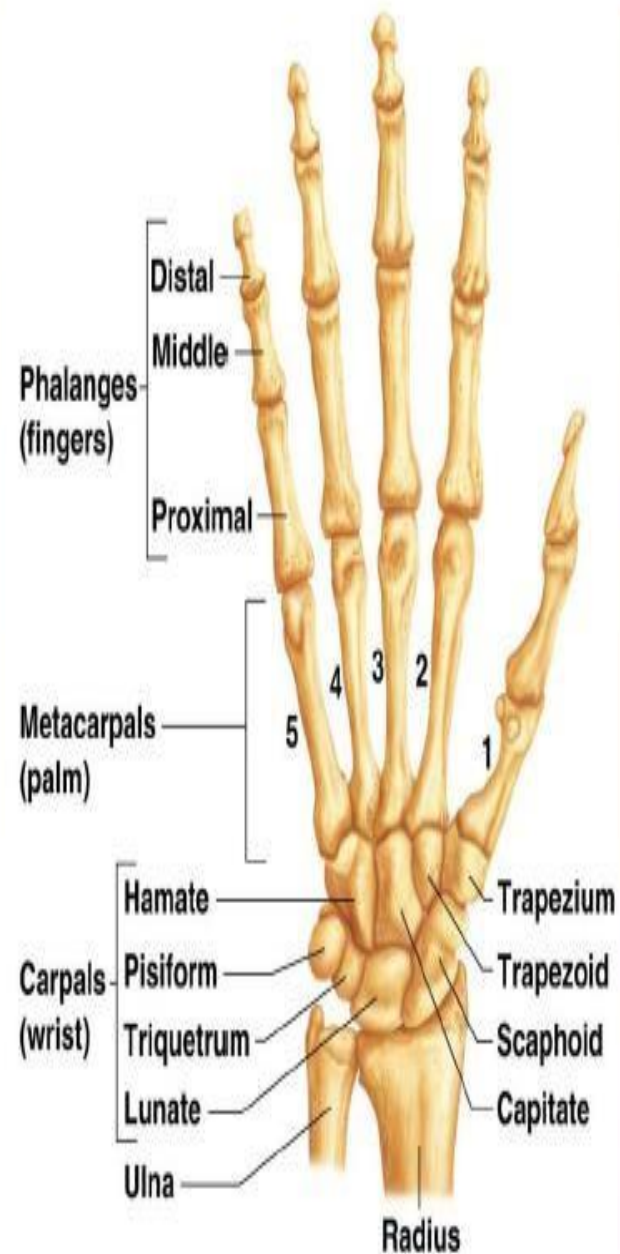
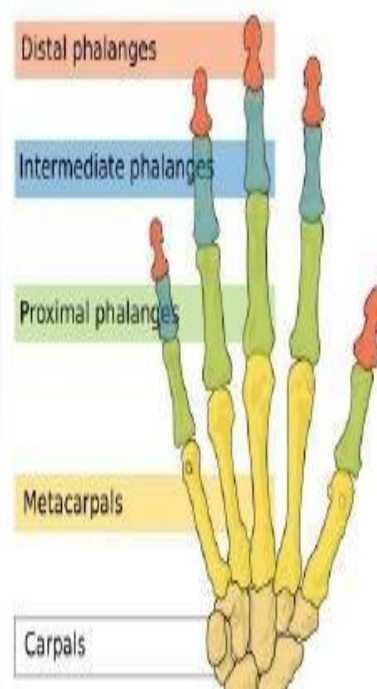


GEEKYMEDICS.COM

## Hand

Five metacarpals attached to the carpal bones.

The five fingers of each hand include **one thumb** and **four fingers**. Each finger consists of small long bones called **phalanges**. The thumb have **two** phalanges and other fingers have **three** phalanges.



Copyright © 2009 Pearson Education, Inc., publishing as Pearson Benjamin Cummings.